

INSPECTION CERTIFICATE

In accordance with EN 10204: 3.1



Customer: **PRETEC AS**

Purchasing order No: **EX2019312/207403**

Markng: **PRETEC CE PAPS-"100x150-70 P002-S001"**

Order Quantity:**2160pcs**

Part Name:**Welding plates PAPS 100x150-70**

Material:**Plate:Q345D/S355J2;Anchor:Q345D**

Finishing:**Sandblasted and iron oxide shop primer,gre**

Article No: **3330014**

Drawing No:**PTC-059 of Jun.20.2019**

**No. 9, Jinchang Rd,Haining
Zhejiang Pro. - China
www.chinapretec.com**

Certificate No:23928

Date: 2020-01-09

Chemical composition analysis for plate material,ref certificate from mill:201911200000124

| Batch No. | 9K08293 | C | Si | Mn | P | S |
|--------------|---------|------|------|------|-------|-------|
| Requirements | Max | 0.20 | 0.55 | 1.70 | 0.030 | 0.025 |
| | Min | | | | | |
| Test Report | | 0.16 | 0.22 | 1.35 | 0.013 | 0.008 |

Mechanical tests for plate material,ref certificate from mill:201911200000124

| Batch No. | 9K08293 | Yield | Tensile | Elongation | Impact Test |
|--------------|---------|------------|---------|------------|-------------|
| | | Rp0.2(MPa) | Rm(MPa) | (EL)% | ℃ |
| Requirements | Min | 345 | 470 | 21 | 27J |
| | Max | | 630 | | |
| Test Report | | 404 | 513 | 29 | 105 |

Chemical composition analysis for anchor material,ref certificate from mill:BGAPD1806030001200

| Batch No. | A375070A | C | Si | Mn | P | S |
|--------------|----------|------|------|------|-------|-------|
| Requirements | Max | 0.18 | 0.55 | 1.70 | 0.035 | 0.025 |
| | Min | | | | | |
| Test Report | | 0.15 | 0.18 | 1.38 | 0.007 | 0.001 |

Mechanical tests for anchor material,ref certificate from mill:BGAPD1806030001200

| Batch No. | A375070A | Yield | Tensile | Elongation |
|--------------|----------|------------|---------|------------|
| | | Rp0.2(MPa) | Rm(MPa) | (EL)% |
| Requirements | Min | 345 | 470 | 21 |
| | Max | | 630 | |
| Test Report | | 352 | 533 | 35.5 |

Inspection of execution:

| DIM. | w | h | a | c | t | L1 | Ød | Ød2 | k | iron oxid shop primer |
|---------|-------|-------|----|----|-------------|------|--------|--------|----|-----------------------|
| Spec/mm | 100±3 | 150±3 | 20 | 30 | 10+0.9/-0.5 | 60±3 | 12±0.2 | 24±0.5 | a4 | ≈20um |
| 1 | 99.6 | 149.3 | ok | ok | 10.1 | 59.8 | 11.9 | 24.3 | ok | ok |
| 2 | 100.2 | 151.1 | ok | ok | 9.9 | 60.4 | 12.1 | 24.1 | ok | ok |
| 3 | 99.8 | 150.4 | ok | ok | 10.2 | 59.8 | 11.8 | 23.8 | ok | ok |
| 4 | 100.6 | 150.6 | ok | ok | 10.0 | 60.3 | 12.0 | 23.7 | ok | ok |
| 5 | 101.3 | 149.8 | ok | ok | 9.8 | 60.1 | 12.1 | 23.9 | ok | ok |

Zhejiang Pretec Metal Products Co., Ltd.

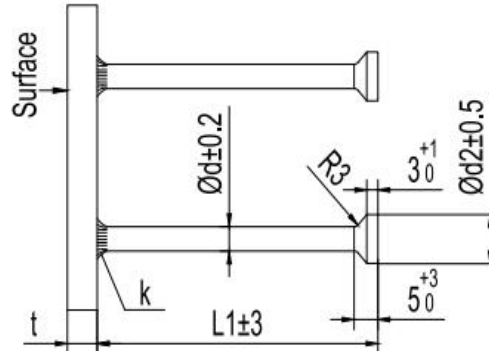
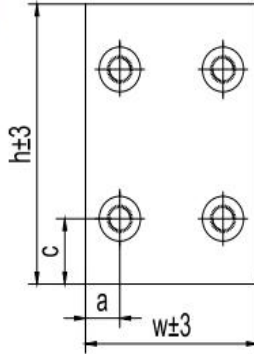
TEL:+86-573-87878119/80700633 FAX:+86-573-87878229

General appearance of plate: ☒ approved ☐ not approved

Welding: Acc.To level C EN ISO 5817-B:

☒ approved ☐ not approved

Marking: PRETEC CE PAPS-"100x150-70 P002-S001"



Marking:



| type | w | h | a | c | t | d | d2 | L1 | k | Anchor no. | Weight |
|------------------|-----|-----|----|----|------------------------------------|----|----|-----|-----------------------|------------|--------|
| PAPS 50x100-68 | 50 | 100 | 25 | 20 | 8 ^{+0.9} _{-0.5} | 12 | 24 | 60 | a4 (min 4 – max 5.6) | 2 | 0.4 |
| PAPS 50x100-108 | 50 | 100 | 25 | 20 | 8 ^{+0.9} _{-0.5} | 12 | 24 | 100 | a4 (min 4 – max 5.6) | 2 | 0.5 |
| PAPS 100x100-68 | 100 | 100 | 20 | 20 | 8 ^{+0.9} _{-0.5} | 12 | 24 | 60 | a4 (min 4 – max 5.6) | 4 | 0.9 |
| PAPS 100x100-108 | 100 | 100 | 20 | 20 | 8 ^{+0.9} _{-0.5} | 12 | 24 | 100 | a4 (min 4 – max 5.6) | 4 | 1 |
| PAPS 100x150-70 | 100 | 150 | 20 | 30 | 10 ^{+0.9} _{-0.5} | 12 | 24 | 60 | a4 (min 4 – max 5.6) | 4 | 1.5 |
| PAPS 100x150-110 | 100 | 150 | 20 | 30 | 10 ^{+0.9} _{-0.5} | 12 | 24 | 100 | a4 (min 4 – max 5.6) | 4 | 1.6 |
| PAPS 100x200-72 | 100 | 200 | 15 | 40 | 12 ^{+0.9} _{-0.5} | 13 | 25 | 60 | a4 (min 4 – max 5.6) | 4 | 2.2 |
| PAPS 100x200-112 | 100 | 200 | 15 | 40 | 12 ^{+0.9} _{-0.5} | 13 | 25 | 100 | a4 (min 4 – max 5.6) | 4 | 2.3 |
| PAPS 100x200-162 | 100 | 200 | 15 | 40 | 12 ^{+0.9} _{-0.5} | 13 | 25 | 150 | a4 (min 4 – max 5.6) | 4 | 2.6 |
| PAPS 150x150-72 | 150 | 150 | 30 | 30 | 12 ^{+0.9} _{-0.5} | 13 | 25 | 60 | a4 (min 4 – max 5.6) | 4 | 2.4 |
| PAPS 150x150-112 | 150 | 150 | 30 | 30 | 12 ^{+0.9} _{-0.5} | 13 | 25 | 100 | a4 (min 4 – max 5.6) | 4 | 2.6 |
| PAPS 150x150-162 | 150 | 150 | 30 | 30 | 12 ^{+0.9} _{-0.5} | 13 | 25 | 150 | a4 (min 4 – max 5.6) | 4 | 2.8 |
| PAPS 200x200-72 | 200 | 200 | 40 | 40 | 12 ^{+0.9} _{-0.5} | 13 | 25 | 60 | a5 (min 5 – max 6.75) | 4 | 4.1 |
| PAPS 200x200-112 | 200 | 200 | 40 | 40 | 12 ^{+0.9} _{-0.5} | 13 | 25 | 100 | a5 (min 5 – max 6.75) | 4 | 4.3 |
| PAPS 200x200-162 | 200 | 200 | 40 | 40 | 12 ^{+0.9} _{-0.5} | 16 | 32 | 150 | a5 (min 5 – max 6.75) | 4 | 4.8 |
| PAPS 100x300-165 | 100 | 300 | 20 | 60 | 15 ⁺¹ _{-0.6} | 16 | 32 | 150 | a5 (min 5 – max 6.75) | 4 | 4.6 |
| PAPS 200x300-165 | 200 | 300 | 40 | 60 | 15 ⁺¹ _{-0.6} | 16 | 32 | 150 | a5 (min 5 – max 6.75) | 4 | 8.1 |
| PAPS 250x250-165 | 250 | 250 | 40 | 40 | 15 ⁺¹ _{-0.6} | 16 | 32 | 150 | a5 (min 5 – max 6.75) | 4 | 8.4 |
| PAPS 300x300-165 | 300 | 300 | 60 | 60 | 15 ⁺¹ _{-0.6} | 16 | 32 | 150 | a5 (min 5 – max 6.75) | 4 | 11.1 |

All the data on the above form is real and valid.

Conclusion: ☒ Yes ☐ No

3.1 Inspection certificate are subject to change without notice.

Works inspector: Echo Xiang
Checked by: Jianbo Gu
Date: 2020-01-09