

INSPECTION CERTIFICATE

In accordance with EN 10204: 3.1



Customer: **PRETEC AS**

Purchasing order No: **EX2019327/208535**

Order Quantity: **340pcs**

Part Name: **Dowel Ø25×3000**

Material: **Q345D**

Finishing: **HDG**

Article No: **2050022**

Drawing No: **PTC-092 of Jan.20.2017**

No. 9, Jinchang Rd, Haining

Zhejiang Pro. - China

www.chinapretec.com

Certificate No: 23946

Date: 2020-01-08

Chemical composition analysis for material, ref certificate from mill:

Batch No.	PTC19112101	C	Si	Mn	P	S
Requirements	Max	0.20	0.55	1.70	0.030	0.025
	Min					
Test Report		0.17	0.40	1.32	0.013	0.005

Mechanical tests for material, ref certificate from mill: 190104H00434

Batch No.	PTC19112101	Yield	Tensile	Elongation
		Rp0.2(MPa)	Rm(MPa)	(EL)%
Requirements	Min	345	470	21
	Max		630	
Test Report		393	572	27

Inspection of execution:

DIM.	d	L	Mean HDG
Spec/mm	Ø25±0.15	3000±5	≥55um
1	24.95	3001	81
2	24.92	3000	77
3	24.95	3000	89
4	24.91	3001	58
5	24.92	3001	67

General appearance:

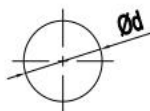
☒ approved

☐ not approved

HDG acc.to ISO 1461: 2009/ Q/PTC-T19A:

☒ approved

☐ not approved



d	L
16	500 ±2
20	300 ±2
20	400 ±2
20	500 ±2
20	600 ±2
20	3000 ±5
25	500 ±2
25	600 ±2

All the data on the above form is real and valid.

Conclusion:

☒ Yes ☐ No

3.1 Inspection certificate are subject to change without notice.

Works inspector: Echo Xiang

Checked by: Jianbo Gu

Date: 2020-01-08

Zhejiang Pretec Metal Products Co., Ltd.

TEL: +86-573-87878119/80700633 FAX: +86-573-87878229